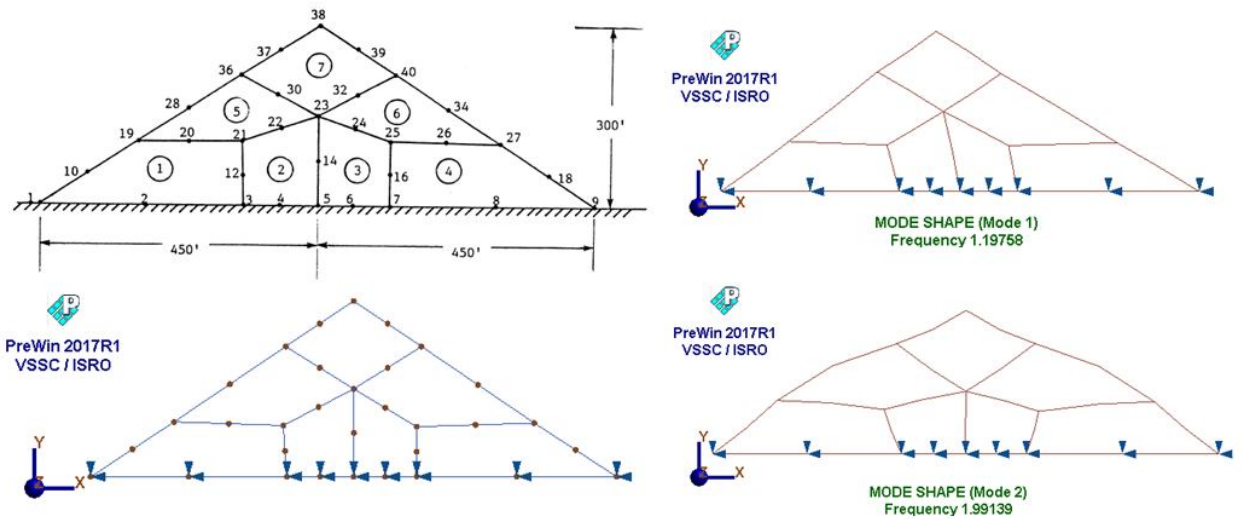


Natural frequencies of an earth dam



Boundary Condition : Along $Y = 0$, all 6 degrees of freedom constrained

Material Property : $E=11.707 \times 10^6 \text{ psi}$, $\nu = 0.45$, $\rho = 4.0415 \text{ lb-sec}^2/\text{in}^4$

Element Type : 2-D plane strain element

Finite element statistics :

Number of elements	Number of nodes	Degrees of freedom
7	32	46

Mode	Theoretical	FEAST ^{SMT}	NISA2 [®]
1	1.24	1.19	1.24
2	2.04	1.99	1.99
3	2.04	2.17	2.37
4	3.24	2.67	2.97
5	3.44	2.87	3.47