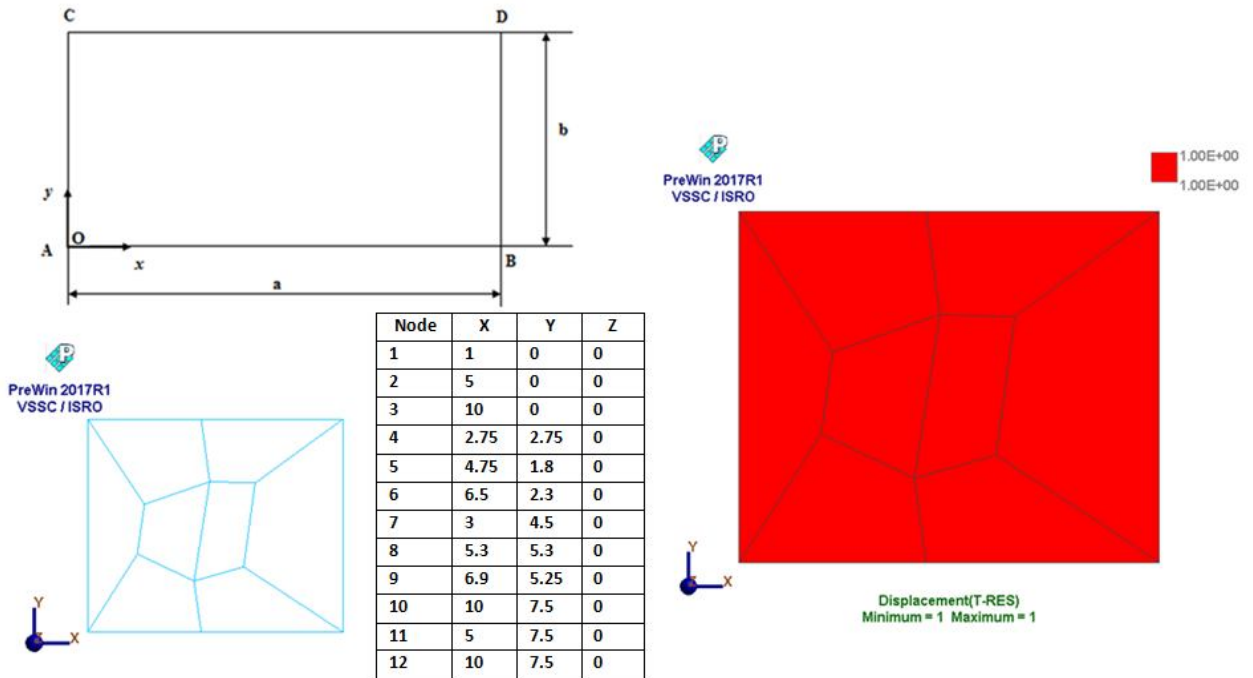


Static analysis: 2D patch test



Load	:	None			
Boundary condition	:	At all nodes on edges AB, BD, DC and CA , x displacement of 1 mm and y displacement of 0 mm			
Material property	:	E =200 GPa, ν = 0.3			
Geometric property	:	width, a = 10mm; depth, b = 7.5mm; thickness, t = 1mm			
Element type	:	4- node plane stress elements			
Finite element statistics	:	Number of elements	Number of nodes	Degrees of Freedom	
		8	12	12	

Direct stress σ_{yy} (MPa) at point D

NAFEMS	
FEAST^{SMT}	Internal displacements are equal to applied displacement.
NASTRAN[®]	
